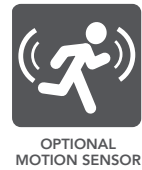
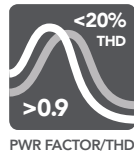
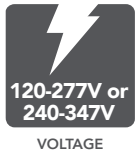
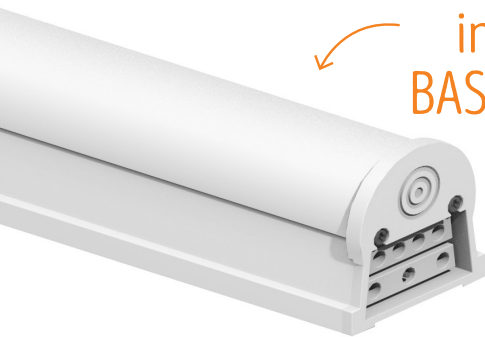


LEDBARKIT-INTERNAL DRIVER (LBI) THE LINEAR TRANSFORMER



one light – unlimited possibilities



available in both
BASE & PRO

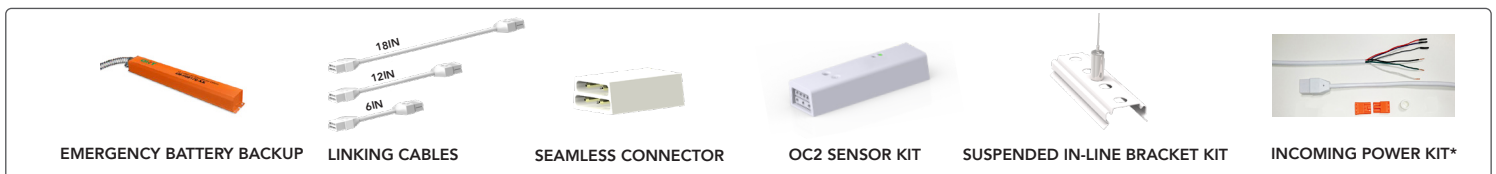
	PRO	BASE
DIMMABLE	✓ 0-10V	—
CONTROL POWER	✓ 12V	—
FLEX COLOR	✓	—
FLEX WATT	✓	—
WARRANTY	10YR	5YR
L70	>100,000 HRS	50,000 HRS

DEFAULT CONFIGURATIONS

PART #	UPC	DESCRIPTION	WATTAGE	LUMENS	LPW	CCT (K)	DLC PRODUCT CODE
RP-LBI-G1-2F-6W-27K-WC2	844006024826	2FT PRO WARM CCT INTERNAL DRIVE LIGHT BAR	6/9/12	696-1524	116-127	2700/3000/3500	
RP-LBI-G1-2F-6W-40K-WC	844006023867	2FT PRO INTERNAL DRIVE LIGHT BAR	6/9/12	780-1560	126-137	3500/4000/5000	PFLO5RPC
RP-LBI-G1-3F-10W-27K-WC2	844006024833	3FT PRO WARM CCT INTERNAL DRIVE LIGHT BAR	10/12/15	1270-1980	127-132	2700/3000/3500	
RP-LBI-G1-3F-10W-40K-WC	844006023959	3FT PRO INTERNAL DRIVE LIGHT BAR	10/12/15	1400-2100	137-142	3500/4000/5000	PTTC4A0W
RP-LBI-G1-4F-15W-27K-WC2	844006024840	4FT PRO WARM CCT INTERNAL DRIVE LIGHT BAR	10/15/25	1260-3400	126-136	2700/3000/3500	
RP-LBI-G1-4F-15W-40K-WC	844006024079	4FT PRO INTERNAL DRIVE LIGHT BAR	10/15/25	1462-3653	136-146	3500/4000/5000	PCW0MQPB
RP-LBI-G1-4F-15W-40K-B	844006024215	4FT BASE INTERNAL DRIVE LIGHT BAR	15	1996	139	4000	PMROEESV

Default settings are above. See pages 7 and 8 for additional styles, lumen packages, color temperatures and options.

POPULAR ACCESSORIES (SOLD SEPARATELY)



***INCOMING POWER KIT NOW SOLD SEPERATELY – SEE PAGE 3 FOR DETAILS**

(SEE PAGE 11 FOR MORE ACCESSORIES)

Light Efficient Design

LIGHT EFFICIENT DESIGN HEADQUARTERS 188 S. Northwest Highway • Cary, IL 60013
 INNOVATION & MANUFACTURING CENTER 30 Log Bridge Road, Building 200 • Middleton, MA 01949
 847.380.3540 • led-llc.com



03.17.20 Information is subject to change without notice.

LED BARKIT-INTERNAL DRIVER (LBI) THE LINEAR TRANSFORMER



INCLUDED WITH EVERY BAR

2X Surface Mount Magnetic Clips
(w/ easy bend and break lines)

4X 1/4" hex head-self drilling screws

1X Flex setting cover



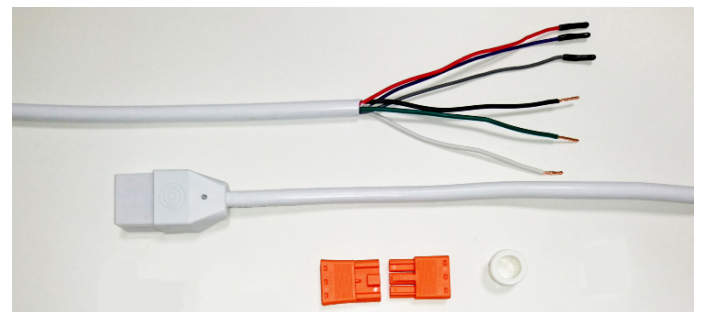
INCOMING POWER KIT: RP-LBI-G1-IP-3F-DIM – SOLD SEPARATELY

1A Incoming power cable (bar input side)

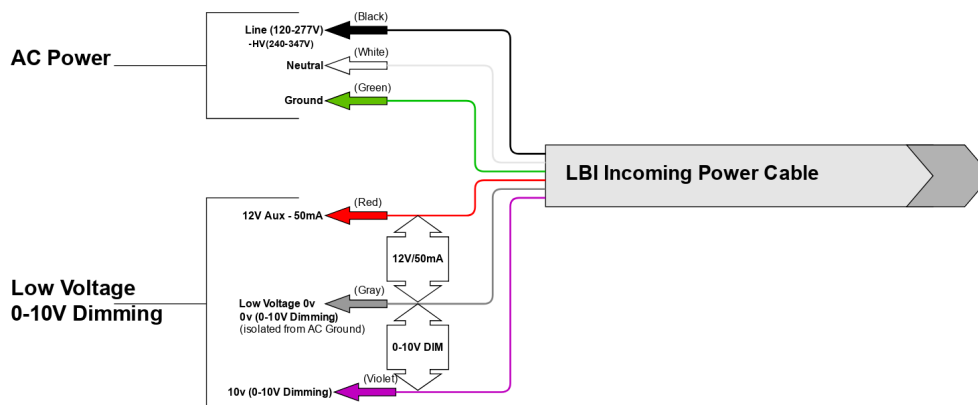
1B Incoming power cable (pigtail side)

1X Service Disconnect

1X Abrasion protection grommet



WIRING DIAGRAM



LIGHT EFFICIENT DESIGN HEADQUARTERS 188 S. Northwest Highway • Cary, IL 60013
INNOVATION & MANUFACTURING CENTER 30 Log Bridge Road, Building 200 • Middleton, MA 01949
847.380.3540 • led-llc.com

03.17.20 Information is subject to change without notice.