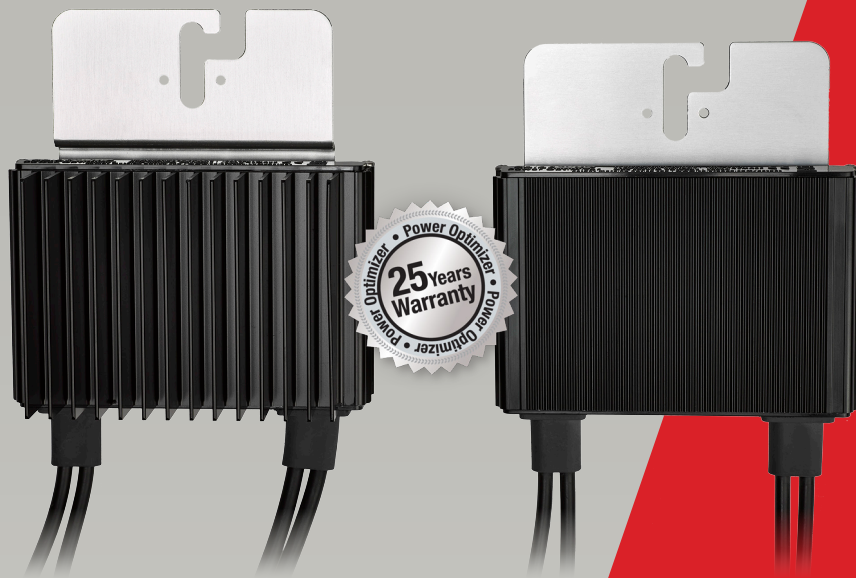




Power Optimizer

P320 / P370 / P400 / P405 / P505



POWER OPTIMIZER

PV power optimization at the module-level

- Specifically designed to work with SolarEdge inverters
- Up to 25% more energy
- Superior efficiency (99.5%)
- Mitigates all types of module mismatch losses, from manufacturing tolerance to partial shading
- Flexible system design for maximum space utilization
- Fast installation with a single bolt
- Next generation maintenance with module-level monitoring
- Meets NEC requirements for arc fault protection (AFCI) and Photovoltaic Rapid Shutdown System (PVRSS)
- Module-level voltage shutdown for installer and firefighter safety



Power Optimizer

P320 / P370 / P400 / P405 / P505

OPTIMIZER MODEL (typical module compatibility)	P320 (for high-power 60-cell modules)	P370 (for higher-power 60 and 72-cell modules)	P400 (for 72 & 96-cell modules)	P405 (for thin film modules)	P505 (for higher current modules)	
INPUT						
Rated Input DC Power ⁽¹⁾	320	370	400	405	505	W
Absolute Maximum Input Voltage (Voc at lowest temperature)	48	60	80	125 ⁽²⁾	83 ⁽²⁾	Vdc
MPPT Operating Range	8 - 48	8 - 60	8 - 80	12.5 - 105	12.5 - 83	Vdc
Maximum Short Circuit Current (Isc)	11		10.1		14	Adc
Maximum DC Input Current	13.75		12.63		17.5	Adc
Maximum Efficiency	99.5					%
Weighted Efficiency	98.8				98.6	%
Overvoltage Category	II					
OUTPUT DURING OPERATION (POWER OPTIMIZER CONNECTED TO OPERATING SOLAREEDGE INVERTER)						
Maximum Output Current	15					Adc
Maximum Output Voltage	60		85			Vdc
OUTPUT DURING STANDBY (POWER OPTIMIZER DISCONNECTED FROM SOLAREEDGE INVERTER OR SOLAREEDGE INVERTER OFF)						
Safety Output Voltage per Power Optimizer	1 ± 0.1					Vdc
STANDARD COMPLIANCE						
EMC	FCC Part15 Class B, IEC61000-6-2, IEC61000-6-3					
Safety	IEC62109-1 (class II safety), UL1741					
RoHS	Yes					
INSTALLATION SPECIFICATIONS						
Maximum Allowed System Voltage	1000					Vdc
Compatible inverters	All SolarEdge Single Phase and Three Phase inverters					
Dimensions (W x L x H)	128 x 152 x 28 / 5 x 5.97 x 1.1	128 x 152 x 36 / 5 x 5.97 x 1.42	128 x 152 x 50 / 5 x 5.97 x 1.96	128 x 152 x 59 / 5 x 5.97 x 2.32		mm / in
Weight (including cables)	630 / 1.4	750 / 1.7	845 / 1.9	1064 / 2.3		gr / lb
Input Connector	MC4 ⁽³⁾					
Output Wire Type / Connector	Double Insulated; MC4					
Output Wire Length	0.95 / 3.0	1.2 / 3.9				m / ft
Operating Temperature Range	-40 - +85 / -40 - +185					°C / °F
Protection Rating	IP68 / NEMA6P					
Relative Humidity	0 - 100					%

⁽¹⁾ Rated STC power of the module. Module of up to +5% power tolerance allowed

⁽²⁾ NEC 2017 requires max input voltage be not more than 80V

⁽³⁾ For other connector types please contact SolarEdge

PV SYSTEM DESIGN USING A SOLAREEDGE INVERTER ⁽⁴⁾⁽⁵⁾	SINGLE PHASE HD-WAVE		SINGLE PHASE	THREE PHASE 208V	THREE PHASE 480V	
	P320, P370, P400 P405 / P505	8 6		10 8	18 14	
Minimum String Length (Power Optimizers)						
Maximum String Length (Power Optimizers)		25		25	50 ⁽⁶⁾	
Maximum Power per String	5700 (6000 with SE7600-US - SE11400- US)	5250	6000 ⁽⁷⁾	12750 ⁽⁸⁾		W
Parallel Strings of Different Lengths or Orientations	Yes					

⁽⁴⁾ For detailed string sizing information refer to: http://www.solaredge.com/sites/default/files/string_sizing_na.pdf

⁽⁵⁾ It is not allowed to mix P405/P505 with P320/P370/P400/P600/P700/P800 in one string

⁽⁶⁾ A string with more than 30 optimizers does not meet NEC rapid shutdown requirements; safety voltage will be above the 30V requirement

⁽⁷⁾ For SE1.4.4KUS/SE43.2KUS: It is allowed to install up to 6,500W per string when 3 strings are connected to the inverter (3 strings per unit for SE43.2KUS) and when the maximum power difference between the strings is up to 1,000W

⁽⁸⁾ For SE30KUS/SE33.3KUS/SE66.6KUS/SE100KUS: It is allowed to install up to 15,000W per string when 3 strings are connected to the inverter (3 strings per unit for SE66.6KUS/SE100KUS) and when the maximum power difference between the strings is up to 2,000W

