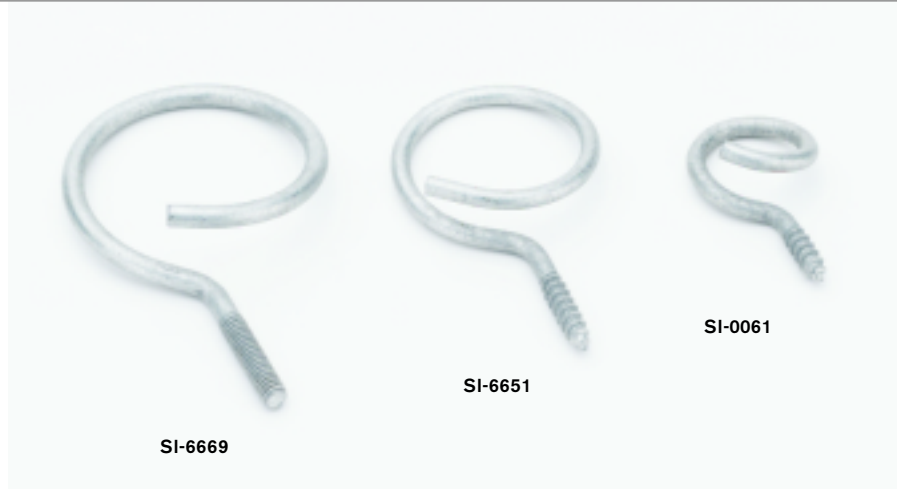


BRIDLE RING

Part Number	Bellcore Specification	PID Number
SI-0061	7912	400 260 378
SI-0062	7912	400 260 394
SI-6651	7912	400 260 394
SI-6653	7912	400 260 386
SI-6666	8518	400 497 202
SI-6667	8518	400 497 186

- Used to secure drop wire to wood, masonry or metal surfaces
- Constructed of galvanized steel for corrosion resistance
- A and C bridle rings have wood screw heads
- B, K, M and R bridle rings have machine screw threads



Part Number	Style	Eye Diam.	Thread Size	Package Qty	Carton Qty	Carton Size	Carton Weight
SI-0060	B	5/8"	10/24	25	1000	12" x 12" x 8"	28 Lbs.
SI-0061	C	7/8"	10	25	750	12" x 12" x 8"	30 Lbs.
SI-0062	C	1 5/8"	14	25	300	12" x 12" x 8"	40 Lbs.
SI-0063	C	3"	18	25	100	12" x 12" x 8"	32 Lbs.
SI-6651	A	1 5/8"	16	25	600	12" x 12" x 8"	40 Lbs.
SI-6653	C	1 1/4"	14	25	600	12" x 12" x 8"	35 Lbs.
SI-6666	K	3/4"	10/24	25	1200	12" x 12" x 8"	45 Lbs.
SI-6667	M	1 1/4"	10/24	25	750	12" x 12" x 8"	41 Lbs.
SI-6669	R	1 5/8"	1/4-20	25	525	12" x 12" x 8"	44 Lbs.

BASEBOARD CLIP

- Used to secure coaxial or twisted pair cable to baseboard
- Steel construction, enamel coated
- Patent pending
- Add suffix to part number to denote color: N = Neutral, W = White, B = Black

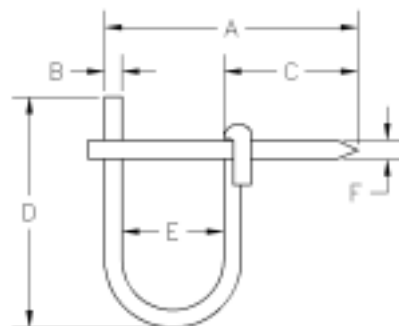
Part Number	Cable Size	Carton Qty	Carton Size	Carton Weight
SI-0991	RG 6	1000	6" x 4" x 4"	4 Lbs.
SI-0992	RG 6 Quad	1000	6" x 4" x 4"	4 Lbs.
SI-0993	Telephone	1000	6" x 4" x 4"	4 Lbs.
SI-0994	Category 5	1000	6" x 4" x 4"	4 Lbs.



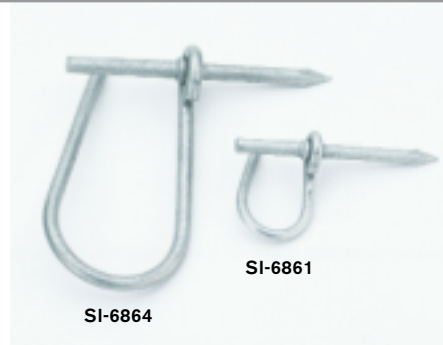
DRIVE RING

Bellcore Specification: 6835

Part Number	PID Number
SI-6861	400 260 584
SI-6862	400 260 592
SI-6863	401 024 609
SI-6864	400 260 626



- Used for temporary or permanent support of drop wires
- Constructed of galvanized steel for high durability



Part Number	Eye Diameter	Dimensions						Carton Qty	Master Qty	Master Size	Master Weight
		(A)	(B)	(C)	(D)	(E)	(F)				
SI-6861	1/2"	2 1/16"	.125"	1 3/8"	3/4"	1/2"	.120"	50	500	16" x 8" x 6"	9 Lbs.
SI-6862	5/8"	2 1/4"	.135"	1 1/16"	1 1/8"	5/8"	.165"	50	500	16" x 8" x 6"	15 Lbs.
SI-6863	3/4"	2 5/16"	.177"	1 1/2"	2 1/16"	3/8"	.165"	25	250	16" x 8" x 6"	15 Lbs.
SI-6864	1 1/4"	2 15/16"	.192"	1 5/8"	2 3/4"	1 1/4"	.203"	25	250	16" x 8" x 6"	22 Lbs.