

DRAWING NO.
SC011810-01

4

3

2

1

REV	DATE	DESCRIPTION	ECO	BY	C'H'K.
A	12/17/2007 12:00:00 AM	"A" & "B" ITEM REGRAB PROJECT	15065	MA	MDR

2 3 2 3

CATALOG NO. FIG. 1	CATALOG NO. FIG. 2	AWG		METRIC WIRE SIZE		B	C	D	F	L ¹	L ²	J	TORQUE	
		MIN	MAX	MIN	MAX								Lb*in	N*m
-----	GL4C4C	#8 SOL (.129 DIA)	#4 STR (.231 DIA)	10mm ² SOL. [3.58]	16mm ² STR. [5.13]	1.25 [32]	.75 [19]	1.44 [37]	.94 [24]	-----	1.88 [48]	3/8"	240	27.0
-----	GL2626	#4 SOL (.204 DIA)	2/0 STR (.418 DIA)	25mm ² STR. [6.48]	70mm ² STR. [10.9]	1.69 [43]	.94 [24]	1.94 [49]	1.00 [25]	-----	1.88 [48]	3/8"	240	27.0
-----	GL2929	2/0 SOL (.365 DIA)	250 kcmil (.575 DIA)	70mm ² STR. [10.9]	120mm ² STR. [14.4]	2.22 [56]	1.22 [31]	2.25 [57]	1.25 [32]	-----	2.44 [62]	1/2"	480	54.1
-----	GL3434	300 kcmil (.630 DIA)	500 kcmil (.814 DIA)	150mm ² STR. [16.0]	240mm ² STR. [20.3]	2.81 [71]	1.44 [37]	2.56 [65]	1.38 [35]	-----	2.50 [64]	1/2"	480	54.1
GC3939 ⁴	GL3939	550 kcmil (.855 DIA)	750 kcmil (.998 DIA)	300mm ² STR. [22.6]	300mm ² STR. [22.6]	3.63 [92]	1.75 [44]	3.31 [84]	1.56 [40]	2.25 [57]	3.06 [78]	5/8"	660	74.1
GC4444 ⁴	GL4444	800 kcmil (1.031 DIA)	1000 kcmil (1.152 DIA)	400mm ² STR. [26.1]	500mm ² STR. [28.3]	4.06 [103]	1.94 [49]	3.69 [94]	1.56 [40]	2.5 [64]	3.06 [78]	5/8"	660	74.1
GC2929T4	-----	2/0 SOL (.365 DIA)	250 kcmil (.575 DIA)	70mm ² STR. [10.9]	120mm ² STR. [14.4]	2.21 [56]	1.21 [31]	2.45 [62]	1.25 [32]	1.62 [41]	-----	1/2"	480	54.1

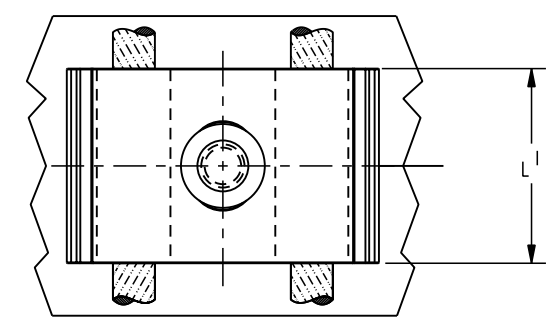
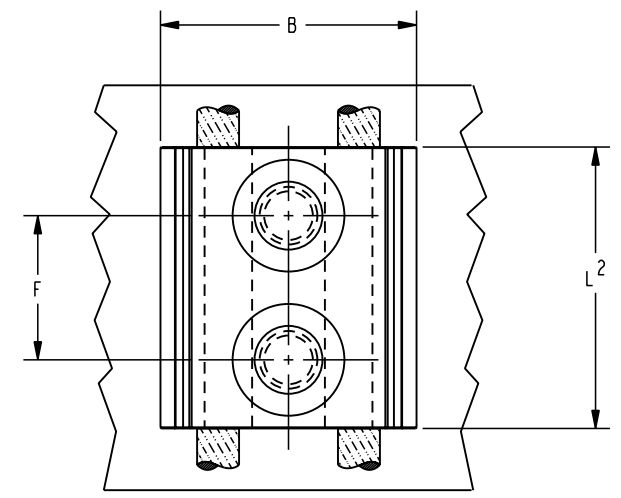


FIG. 1

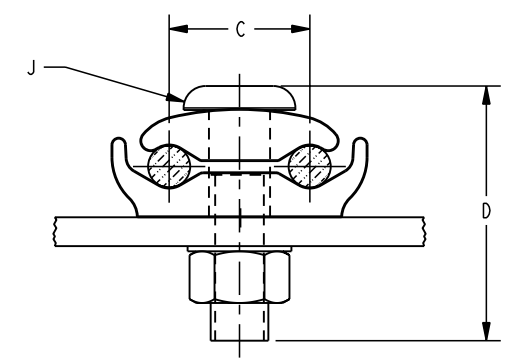


FIG. 2

NOTES:

- STANDARD BASIC CATALOG NUMBER AND BOLT LENGTH IS BASED ON MAXIMUM BAR THICKNESS OF 1/4".
- CATALOG NUMBER WITH -T4 SUFFIX INDICATES USES ON A MAXIMUM BAR THICKNESS OF 1/2" AND REQUIRES A BOLT LENGTH AT LEAST 1/4" LONGER THAN BASIC LENGTH.
- CATALOG NUMBER WITH -T8 SUFFIX INDICATES USE ON A MAXIMUM BAR THICKNESS OF 1" AND REQUIRES A BOLT LENGTH AT LEAST 3/4" LONGER THAN BASIC LENGTH.
- THESE ARE HEX HEAD BOLTS.
- MATERIAL: CAST COPPER ALLOY.
- DIMENSIONS IN [] BRACKETS ARE IN MILLIMETERS ROUNDED OFF TO THE NEAREST MILLIMETER, UNLESS OTHERWISE NOTED, AND ARE FOR REFERENCE ONLY.
- UL 467 LISTED, FILE NO. E9999. SUITABLE FOR DIRECT BURIAL IN CONCRETE OR GROUND.
- "J" OVAL SHANK EVERDUR BOLT, NUT & SPLIT LOCKWASHER EXCEPT WHERE OTHERWISE SPECIFIED.

TO ORDER BURNDY® PRODUCTS CALL		GROUND CLAMP	
UNITED STATES: 1-800-346-4175 (LONDONDERRY, NH)		ITEM NO: --	
CANADA: 1-800-361-6975 (QUEBEC) 1-800-387-6487 (ALL OTHER PROVINCES)		CAT. NO: GC-- (TABLE), GL-- (TABLE)	
FOR PRODUCT INFO: http://www.burndy.com		DRAWN BY: M.R. 12/8/43	
		CHECKER: A.E.B. 12/14/43	
		DSN APPVL: G DITROIA --	
		MFG APPVL: --	
		QA APPVL: A LLOYD --	
		MKT APPVL: K WOO --	
		SCALE: 1:1	
		PROD FAM: --	
		DRAWING NO	
		SC011810-01	
		REV	
		A	
		PROJECT #: PCN 1556	
		SIZE	
		C	
		DOCUMENT TYPE: Production	
		REL LEVEL: Released	
		SHEET 1 OF 1	

REV: PE0200

4

3

2

1