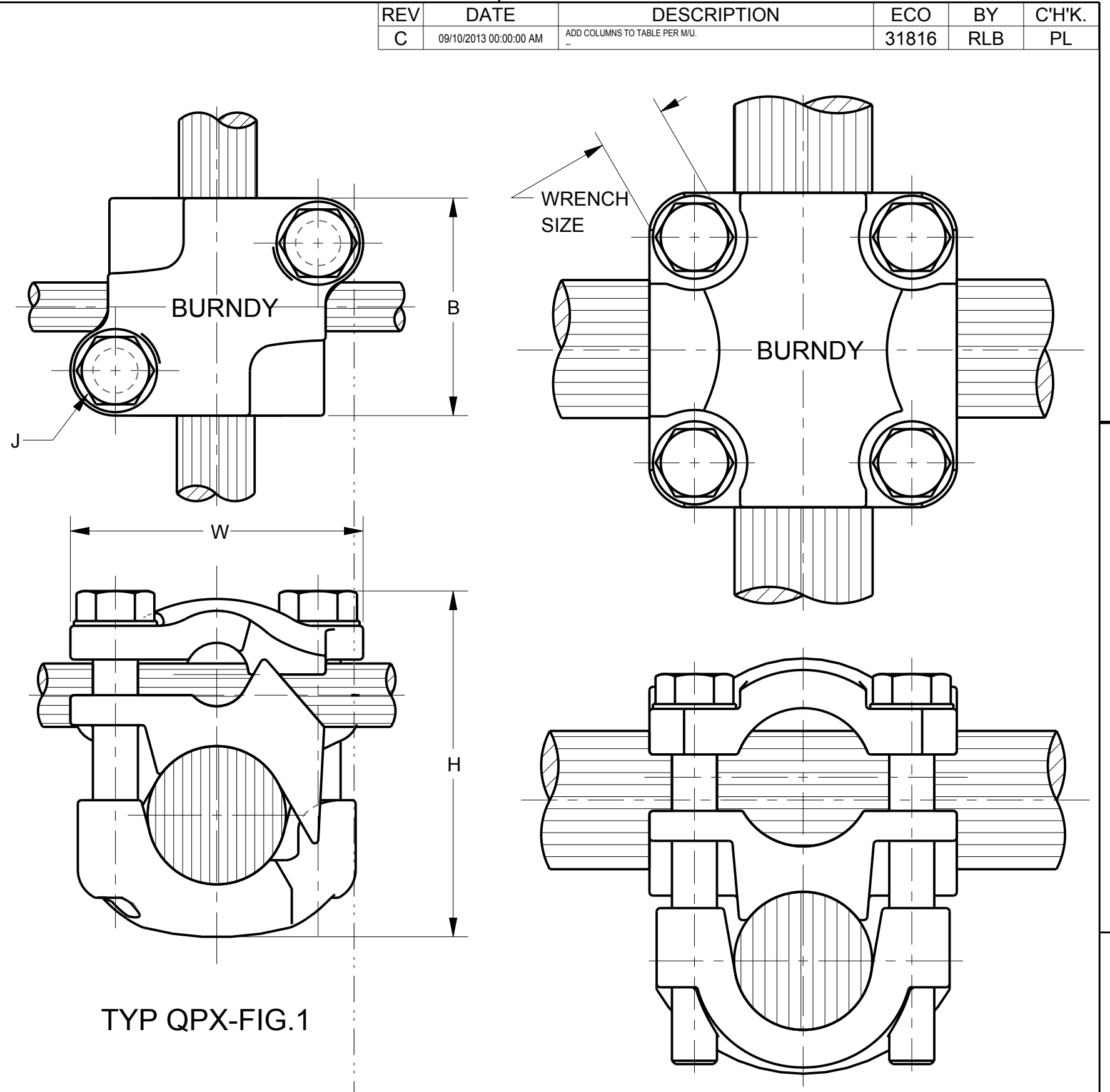


RUN	TAP	CATALOG NUMBER	FIG. NO.	DIMENSIONS IN INCHES				WRENCH SIZE (CROSSFLATS)	TORQUE IN-LB		
				MIN.	MAX.	MIN.	MAX.			B	H MAX.
400 kcmil	800 kcmil	#3 STR.	2/0 STR.	QPX4026	1	1.50	2.56	.312	2.31	1/2	180
400 kcmil	800 kcmil	#1 STR.	4/0 STR.	QPX4028	1	1.81	2.75	.375	2.31	9/16	240
400 kcmil	800 kcmil	3/0 STR.	350 kcmil	QPX4031	1	1.94	2.81	.375	2.31	9/16	240
400 kcmil	800 kcmil	250 kcmil	500 kcmil	QPX4034	2	2.06	3.06	.375	2.31	9/16	240
400 kcmil	800 kcmil	400 kcmil	800 kcmil	QPX4040	2	2.31	3.19	.375	2.44	9/16	240
500 kcmil	1000 kcmil	#8 SOL.	#4 STR.	QPX444C	1	1.38	2.44	.312	2.25	1/2	180
500 kcmil	1000 kcmil	#6 STR.	#2 STR.	QPX442C	1	1.38	2.69	.312	2.22	1/2	180
500 kcmil	1000 kcmil	#3 STR.	2/0 STR.	QPX4426	1	1.50	2.69	.312	2.25	1/2	180
500 kcmil	1000 kcmil	#1 STR.	4/0 STR.	QPX4428	1	1.81	2.88	.375	2.44	9/16	240
500 kcmil	1000 kcmil	3/0 STR.	350 kcmil	QPX4431	1	1.94	3.06	.375	2.44	9/16	240
500 kcmil	1000 kcmil	250 kcmil	500 kcmil	QPX4434	2	2.06	3.06	.375	2.44	9/16	240
500 kcmil	1000 kcmil	400 kcmil	800 kcmil	QPX4440	2	2.31	3.44	.375	2.44	9/16	240
500 kcmil	1000 kcmil	500 kcmil	1000 kcmil	QPX4444	2	2.62	3.44	.375	2.56	9/16	240
850 kcmil	1500 kcmil	#8 SOL.	#4 STR.	QPX464C	1	1.38	2.94	.312	2.50	1/2	180
850 kcmil	1500 kcmil	#6 STR.	#2 STR.	QPX462C	1	1.38	3.06	.312	2.50	1/2	180
850 kcmil	1500 kcmil	#3 STR.	2/0 STR.	QPX4626	1	1.50	3.06	.312	2.50	1/2	180
850 kcmil	1500 kcmil	#1 STR.	4/0 STR.	QPX4628	1	1.81	3.31	.375	2.69	9/16	240
850 kcmil	1500 kcmil	3/0 STR.	350 kcmil	QPX4631	1	1.94	3.38	.375	2.69	9/16	240
850 kcmil	1500 kcmil	250 kcmil	500 kcmil	QPX4634	2	2.06	3.38	.375	2.69	9/16	240
850 kcmil	1500 kcmil	400 kcmil	800 kcmil	QPX4640	2	2.31	3.69	.375	2.69	9/16	240
850 kcmil	1500 kcmil	500 kcmil	1000 kcmil	QPX4644	2	2.44	3.88	.375	2.69	9/16	240
850 kcmil	1500 kcmil	850 kcmil	1500 kcmil	QPX4646	2	3.19	4.56	.500	3.31	3/4	480
1200 kcmil	2000 kcmil	#8 SOL.	#4 STR.	QPX484C	1	1.38	3.00	.312	2.75	1/2	180
1200 kcmil	2000 kcmil	#6 STR.	#2 STR.	QPX482C	1	1.38	3.06	.312	2.75	1/2	180
1200 kcmil	2000 kcmil	#3 STR.	2/0 STR.	QPX4826	1	1.50	3.25	.312	2.75	1/2	180
1200 kcmil	2000 kcmil	#1 STR.	4/0 STR.	QPX4828	1	1.81	3.25	.375	2.94	9/16	240
1200 kcmil	2000 kcmil	3/0 STR.	350 kcmil	QPX4831	1	1.94	3.50	.375	2.94	9/16	240
1200 kcmil	2000 kcmil	250 kcmil	500 kcmil	QPX4834	2	2.06	3.56	.375	2.94	9/16	240
1200 kcmil	2000 kcmil	400 kcmil	800 kcmil	QPX4840	2	2.31	3.75	.375	2.94	9/16	240
1200 kcmil	2000 kcmil	500 kcmil	1000 kcmil	QPX4844	2	2.44	4.25	.375	2.94	9/16	240
1200 kcmil	2000 kcmil	850 kcmil	1500 kcmil	QPX4846	2	3.06	4.38	.500	3.31	3/4	480
1200 kcmil	2000 kcmil	1200 kcmil	2000 kcmil	QPX4848	2	3.31	4.75	.500	3.31	3/4	480
# 6 STR.	# 2 STR.	# 6 STR.	# 2 STR.	QPX2C2C	1	1.31	1.50	.312	1.38	1/2	180
# 1 STR.	4/0 STR.	# 6 STR.	# 2 STR.	QPX282C	1	1.31	2.06	.312	1.56	1/2	180
# 1 STR.	4/0 STR.	# 1 STR.	4/0 STR.	QPX2828	1	1.81	2.38	.375	1.81	9/16	240
250 kcmil	500 kcmil	# 6 STR.	# 2 STR.	QPX342C	1	1.38	2.38	.312	1.88	1/2	180
250 kcmil	500 kcmil	# 1 STR.	4/0 STR.	QPX3428	1	1.75	2.75	.375	2.06	9/16	240
250 kcmil	500 kcmil	250 kcmil	500 kcmil	QPX3434	2	2.06	3.00	.375	2.19	9/16	240



VERSITAP
TYPE QPX
FOR RANGE OF COPPER CABLES
PATENTED

AN EXTREMELY VERSATILE CONNECTOR FOR JOINING COMBINATIONS OF CABLE SIZES. THE VERSITAP MAY BE USED TO MAKE PARALLEL TAPS, T-CONNECTIONS, CROSS-CONNECTIONS OR END-TO-END CONNECTIONS. ONLY TEN CONNECTORS ARE REQUIRED TO MAKE ANY OF THESE CONNECTIONS TO CABLE SIZES #6 STR. TO 1000 kcmil. THE CURRENT CARRYING CENTER PLATE IS MADE OF HIGH CONDUCTIVITY COPPER ALLOY; THE TWO OUTER CLAMPING PLATES ARE MADE OF HIGH STRENGTH COPPER ALLOY. THE ENTIRE ASSEMBLY IS CLAMPED TOGETHER BY HIGH STRENGTH DURIUM™ CAP SCREWS. ALL EDGES ARE ROUNDED FOR EASY TAPING.

NOTES:
1. DIMENSIONS IN BRACKETS [] ARE IN MILLIMETERS ROUNDED OFF TO THE NEAREST MILLIMETER, UNLESS OTHERWISE NOTED, AND ARE FOR REFERENCE ONLY.

TO ORDER BURNDY® PRODUCTS CALL		VERSITAP™	
UNITED STATES: 1-800-346-4175 (LONDONDERRY, NH)		ITEM NO: 374575	CAT. NO: QPX (GEN'L.)
CANADA: 1-800-361-6975 (QUEBEC) 1-800-387-6487 (ALL OTHER PROVINCES)		DRAWN BY: B.K. 3.31.50	CHECKER: --
FOR PRODUCT INFO: http://www.burndy.com		DSN APPVL: --	MFG APPVL: --
		QA APPVL: --	MKT APPVL: --
		PROD FAM: --	SCALE: 1:1
		PROJECT #: --	DRAWING NO: SA007887-01
		DOCUMENT TYPE: Sales	REV: C
		REL LEVEL: Released	SHEET 1 OF 1

REV: PEC0200

A