

The Class 9422 Type TCF, TCN, TDF, TDN, TEF, TEN disconnect switches were designed for control panel installations. These switches include common switch profile 30–100 A, interchangeable fuse clips 30–60 A, ability to add fuse clip kits and cable mechanisms. They are compatible with 9422A and 9423, and are UL recognized and CSA certified.

Table 8.51: Class 9422 Flange Mounted, Variable Depth Disconnect Switches

Disconnect Switch Size	Variable Depth Mtg. Range Min.–Max. (inches)	Maximum Horsepower Ratings				Fuse Type	Fuse Clip Rating (Amperes) Non-Interchangeable Type For Class H, J, K or R Fuses Only		Switch and Operating Mechanism Only—Does Not Include Handle Mechanism		Switch for Use With Cable Operators ONLY—Does Not Include Handle Mechanism or Cable Operator		Switch and Operating Mechanism and Handle Mechanism—Overpacked					
		AC Systems Volts (Motor Volts)		DC Using 2 Poles 250 V Maximum	250 V		600 V	Type	\$ Price	Type	\$ Price	Includes Type A1 Handle Mechanism		Includes Type A2 Handle Mechanism				
		208 (200)	240 (230)									480 (460)	600 (575)	Type	\$ Price	Type	\$ Price	
30 A	6-5/8"–18"	7.5	7.5	15	20	5	None	—	—	TCN30	219.	TCN30C	210.	ATCN301	314.	ATCN302	390.	
							H, K, J, R	30	—	TCF30	248.	TCF30C	239.	ATCF301	342.	ATCF302	419.	
								60	30	TCF33	266.	TCF33C	257.	ATCF331	362.	ATCF332	440.	
60 A	6-5/8"–18"	15	15	30	50	10	None	—	—	TDN60	257.	TDN60C	248.	ATDN601	351.	ATDN602	428.	
							H, K, J, R	60	30	TDF60	305.	TDF60C	296.	ATDF601	399.	ATDF602	476.	
								—	60	TDF63	323.	TDF63C	314.	ATDF631	419.	ATDF632	494.	
100 A	6-5/8"–18"	25	30	60	75	20	None	—	—	TEN10	380.	TEN10C	371.	ATEN101	476.	ATEN102	551.	
							H, K, J, R	100	100	TEF10	522.	TEF10C	513.	ATEF101	617.	ATEF102	693.	
200–400 A																		

See 9422 TF and TG on page 8-17

Table 8.52: Internal Barrier Kits *New!*

Provide an additional barrier that helps prevent accidental contact with live parts. Field installed transparent barriers do not restrict visual inspection of the switch. Barriers provide IEC529 IP2X "finger safe" protection when the door of the enclosed disconnect switch is open. A convenient door allows use of test probes without accessing fuses and replacement of fuses without removing barrier.

Barrier must be used with the skirt kit to enclose a panel mounted type 9422 disconnect.



Catalog Number Type ▲ ■	Description	Safety Switch Application (F series only)	9422 Type T Disconnect Application	\$ Price ■
SS06	Interior barrier for 60A Safety Switch, 30 or 60 A 9422 Switch	600 Vac–60 A	600 Vac–30 A 600 Vac–60 A	110.
SS10	Interior barrier for 100 A Safety Switch or 100 A 9422 Switch	600 Vac–100 A	600 Vac–100 A	130.
SS0306SK	Skirt Kit to Enclose 30 or 60 A 9422 Switch (requires SS06)	—	600 Vac–30 A 600 Vac–60 A	150.
SS10SK	Skirt Kit to Enclose 100 A 9422 Switch (requires SS10)	—	600 Vac–100 A	170

- ▲ No Class Number is required.
- For price, use Discount Schedule DE1, not CP1

Table 8.53: Class 9422 Replacement/Retrofit Fuse Clip Kits

Disconnect Switch Size	Switch Type	Fuse Type	Fuse Clip Rating (Amps)		Line and Load Fuse Clip Kit (includes load base and fuse pullers)	
			250 V	600 V	Type	\$ Price
30 A	TCF30 TCN30 TCF33	H, K, J, R	30	—	TC30	28.50
			60	30	TC33	47.60
			60 A	TDN60	H, K, J, R	60
60	60	TD63	66.00			

Table 8.54: Class R Fuse Clip Kits

Disconnect Switch Size	Switch Type	Fuse Type	Fuse Clip Rating (AIR)		Rejection Feature —Class R Kit■	
			250 V	600 V	Type▲	\$ Price
30 A	TCF30	R	30	—	RFK03	16.30
			60	30	RFK06	17.00
60 A	TDF60	R	60	30	RFK06	17.00
			60	60	RFK06H	17.00
100 A	TEF10	R	100	100	RFK10	31.80

- ▲ No Class Number required.
- For price, use Discount Schedule DE1, not CP1.

Table 8.55: Class 9999 Electrical Interlocks

Disconnect Switch Size	Switch Types	Electrical Interlock		
		Electrical Interlock	Type	\$ Price
30 A 60 A 100 A	TCF, TCN TDF, TDN TEF, TEN	SPDT◆	TC10	80.
		DPDT★	TC20	159.
	BTCF, BTCN BTDF, BTDN BTEF, BTEN	SPDT◆	TC11	80.
		DPDT★	TC21	159.

- ◆ 1 N.C. or 1 N.O. depending on wiring.
- ★ 2 N.C., 2 N.O. or 1 N.O., 1 N.C. depending on wiring.

Table 8.57: Class 9422 Disconnect Switch Cable Operators (must purchase switch separately)

Disconnect Switch Size	Switch Types	Cable Mechanisms ▼			Cable Mechanisms with A1 Handle for Types 1, 3, 3R, 4 and 12	
		Cable Length	Type	\$ Price	Type	\$ Price
30 A, 60 A, 100 A	TCF, TCN TDF, TDN TEF, TEN	36"	CFT30	182.	CFT31	278.
		48"	CFT40	194.	—	—
		60"	CFT50	194.	CFT51	288.
		120"	CFT10	222.	CFT11	317.

▼ Purchase handle mechanism separately (9422, A1, A2, A3 or A4).

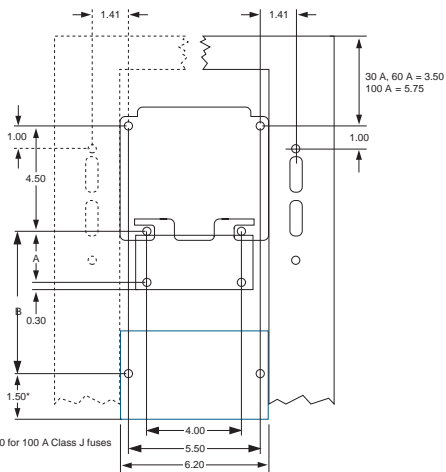


Table 8.56: Dimensions

Switch Type	Maximum Voltage	Fuse Type Class	Dimension A	Dimension B
30 A, 60 A	30 A, 250 V	H, K, R	1.625	—
	30 A, 600 V	H, K, R	4.25	—
	30 A, 600 V	J	1.625	—
	60 A, 250 V	H, K, R	2.25	—
	60 A, 600 V	H, K, R	4.75	—
	60 A, 600 V	J	1.625	—
100 A	100 A, 250 V	H, K, R	—	3.25
	100 A, 600 V	H, K, R	—	5.25
	100 A, 600 V	J	—	3.25