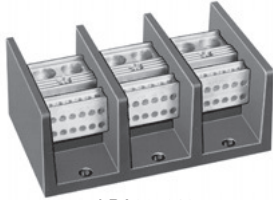
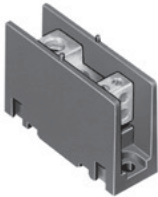


Table 24.32: Standard Power Distribution Blocks

Lug Wire Range ▲		Aluminum ■					
Main	Branch	One Pole		Two Pole		Three Pole	
		Type	\$ Price	Type	\$ Price	Type	\$ Price
(1) #14-2/0	(1) #14-2/0	LBA162101	10.40	LBA262101	22.10	LBA362101	25.70
(1) #6-350 kcmil	(1) #6-350 kcmil	LBA163101	53.00	LBA263101	81.00	LBA363101	107.00
(1) #4-600 kcmil	(1) #4-600 kcmil	LBA164101	95.00	N/A	—	LBA364101	183.00
(2) #4-350 kcmil	(2) #4-350 kcmil	LBA165202	98.00	LBA265202	147.00	LBA365202	189.00
(2) #6-500 kcmil	(2) #4-500 kcmil	LBA1652021	135.00	LBA2652021	206.00	LBA3652021	243.00
(1) #14-2/0	(4) #14-4	LBA162104	30.50	LBA262104	45.80	LBA362104	68.00
(1) #14-2/0	(6) #14-4	N/A	—	N/A	—	LBA362106	131.00
(1) #6-400 kcmil	(4) #14-2	LBA163104	56.00	LBA263104	84.00	LBA363104	113.00
(1) #6-400 kcmil	(6) #14-2	LBA163106	59.00	LBA263106	89.00	LBA363106	122.00
(1) #6-400 kcmil	(8) #14-2	LBA164108	77.00	LBA264108	116.00	LBA364108	161.00
(1) #4-500 kcmil	(6) #14-2/0	LBA165106	126.00	LBA265106	189.00	LBA365106	233.00
(1) #4-500 kcmil	(12) #14-2	LBA165112	134.00	LBA265112	201.00	LBA365112	261.00
(2) #14-2/0	(6) #14-4	LBA163206	60.00	LBA263206	90.00	LBA363206	122.00
(2) #6-500 kcmil	(8) #14-2/0	LBA165208	126.00	LBA265208	189.00	LBA365208	251.00
(2) #6-500 kcmil	(12) #14-4	LBA165212	135.00	LBA265212	206.00	LBA365212	261.00



LBA365212



LBA161104

Table 24.33: Miniature Power Distribution Blocks

Lug Wire Range ▲		Aluminum ■					
Main	Branch	One Pole		Two Pole		Three Pole	
		Type	\$ Price	Type	\$ Price	Type	\$ Price
(1) #14-2	(1) #14-2	LBA161101	13.40	N/A	—	LBA361101	23.40
(1) #14-2	(4) #18-10	LBA161104	26.40	LBA261104	30.60	LBA361104	58.00

Table 24.34: Copper Power Distribution Blocks

Lug Wire Range ▲		Copper ♦					
Main	Branch	One Pole		Two Pole		Three Pole	
		Type	\$ Price	Type	\$ Price	Type	\$ Price
(1) #18-1/0	(1) #18-1/0	LBC162101	99.00	N/A	—	LBC362101	201.00
(1) #6-250 kcmil	(1) #6-250 kcmil	LBC163101	125.00	N/A	—	LBC363101	233.00
(1) #14-2/0	(4) #14-4	LBC162104	99.00	LBC262104	147.00	LBC362104	248.00
(1) #4-500 kcmil	(6) #14-2	LBC163106	153.00	LBC263106	228.00	LBC363106	354.00
(2) #14-2/0	(6) #14-4	LBC163206	134.00	LBC263206	201.00	LBC363206	269.00
(2) #4-500 kcmil	(8) #14-2/0	LBC165208	297.00	N/A	—	LBC365208	593.00
(2) #6-500 kcmil	(12) #14-2	LBC165212	284.00	N/A	—	LBC365212	567.00



LBC165212

- ▲ Lugs suitable for use with 75°C conductors. (#) indicates number of conductors.
- Aluminum blocks will accept either Al or Cu conductors.
- ♦ Cu blocks will accept copper conductors only.

Refer to catalog for dimensions.

Certifications



File Guide E60616 XCFR2



File Class 70361 6228-01

RoHS Compliant



Marked

Table 24.35: Clear Plastic Covers (0.045 in. thick)

Note: There are no covers for miniature blocks.

For LBA Type	Type	\$ Price ea. ★	Dim. A	Dim. B
LBA162..., LBC162	LB21	11.30	1.062	2.750
LBA262..., LBC262	LB22	13.50	1.875	2.750
LBA362..., LBC362 ▼	LB23	15.80	2.688	2.750
LBA163..., LBC163	LB31	12.50	1.782	3.813
LBA263..., LBC263	LB32	14.70	3.313	3.813
LBA363..., LBC363	LB33	17.00	4.844	3.813
LBA164...	LB41	13.50	2.125	4.563
LBA264...	LB42	15.80	4.000	4.563
LBA364...	LB43	18.00	5.875	4.563
LBA165..., LBC165	LB51	14.70	2.719	5.313
LBA265..., LBC265	LB52	17.00	5.656	5.313
LBA365..., LBC365	LB53	19.20	8.375	5.313

- ★ These covers must be ordered in multiples of 5. Each cover comes with two self-tapping screws.
- ▼ Will not work on a 9080LBA362106 block.

Application Data

Voltage Rating—Class B & C—600 V

Blocks are rated based on NEC Table 310-16 using 75°C wire.

Aluminum blocks are tin plated high conductive aluminum.

Copper blocks are tin plated high conductive copper.

Housing material:

- Miniature Blocks are made from high impact thermoplastic rated at 125°C. max. & -40°C. min.
- Full Size Blocks are made from general purpose phenolic rated at 150°C. max. & -40°C. min.

All blocks have a flammability rating of UL 94V-0.

Most blocks have a short circuit current rating for UL508A up to 200 kA for branch circuit applications. For the actual ratings, see catalog 9080CT9603R9/08.