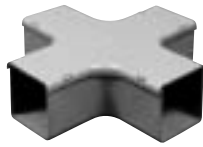


Wiresafe® Fittings

Flat Cross (Clip-on Cover)

Part No.	Size	Std. Ctn. Qty.	Wt. (lbs.) ea.
* EGFCJ	2 x 2	1	0.5
* EGFCCL	3 x 3	1	1.3
† EGFCN	4 x 4	1	1.7
† EGFCR	6 x 6	1	4.8



90° Bend Internal Cover (Clip-on Cover)

Part No.	Size	Std. Ctn. Qty.	Wt. (lbs.) ea.
* EGLIJ	2 x 2	1	0.3
† EGLIL	3 x 3	1	0.7
† EGLIN	4 x 4	1	1.1
† EGLIR	6 x 6	1	3.0



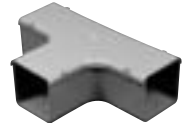
90° Bend Flat Cover (Clip-on Cover)

Part No.	Size	Std. Ctn. Qty.	Wt. (lbs.) ea.
* EGLFJ	2 x 2	1	0.3
* EGLFL	3 x 3	1	0.6
† EGLFN	4 x 4	1	1.1
† EGLFR	6 x 6	1	3.3



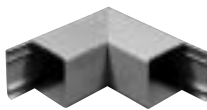
Tee Flat Cover (Clip-on Cover)

Part No.	Size	Std. Ctn. Qty.	Wt. (lbs.) ea.
* EGTfJ	2 x 2	1	0.4
* EGTfL	3 x 3	1	0.9
† EGTfN	4 x 4	1	1.4
† EGTfR	6 x 6	1	3.8



90° Bend External Cover (Clip-on Cover)

Part No.	Size	Std. Ctn. Qty.	Wt. (lbs.) ea.
* EGLEJ	2 x 2	1	0.3
† EGLEL	3 x 3	1	0.8
† EGLEN	4 x 4	1	1.2
† EGLER	6 x 6	1	3.3



Tee External Cover (Clip-on Cover)

Part No.	Size	Std. Ctn. Qty.	Wt. (lbs.) ea.
† EGTEJ	2 x 2	1	0.4
† EGTEL	3 x 3	1	0.9
† EGTEN	4 x 4	1	1.4
† EGTER	6 x 6	1	3.8



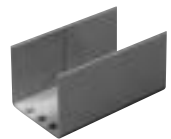
Flange

Part No.	Size	Std. Ctn. Qty.	Wt. (lbs.) ea.
▶ EGfJ	2 x 2	10	1.1
▶ EGfL	3 x 3	10	1.4
▶ EGfN	4 x 4	10	2.2
▶ EGfR	6 x 6	10	3.0



Internal Coupling

Part No.	Size	Std. Ctn. Qty.	Wt. (lbs.) ea.
▶ EGCIJ	2 x 2	10	1.3
▶ EGCIL	3 x 3	10	2.2
▶ EGCIN	4 x 4	10	2.5
—	6 x 6	N/A	N/A



End Cap (UL NEMA 12 Rated)

Part No.	Size	Std. Ctn. Qty.	Wt. (lbs.) ea.
* EGSEJ	2 x 2	10 Pair	0.6
* EGSEL	3 x 3	10 Pair	0.9
* EGSEN	4 x 4	10 Pair	1.6
†† EGSER	6 x 6	10 Pair	5.0



Push Rivets

Part No.	Size	Std. Ctn. Qty.	Wt. (lbs.) ea.
▶ EGPR	N/A	200	0.4



External Coupling

Part No.	Size	Std. Ctn. Qty.	Wt. (lbs.) ea.
EGCEJ	2 x 2	10	1.3
EGCEL	3 x 3	10	2.2
EGCEN	4 x 4	10	2.5
EGCER	6 x 6	10	7.8



Hangers

Part No.	Size	Std. Ctn. Qty.	Wt. (lbs.) ea.
▶ EGsBJ	2 x 2	10	0.9
▶ EGsBL	3 x 3	10	1.3
▶ EGsBN	4 x 4	10	1.9
▶ EGsBR	6 x 6	10	2.8



* Molded fitting—couplings not needed

† Fabricated fitting—order couplings separately

†† No coupling is required for 6" fabricated end cap