



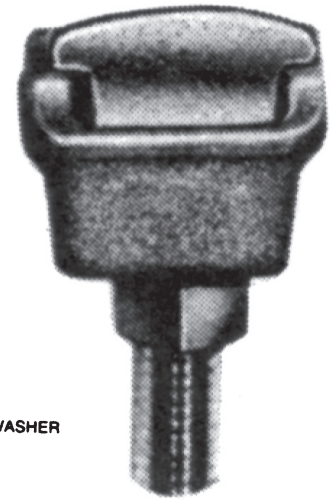
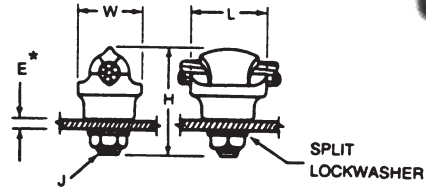
# TERMINALS BRONZE BOLTED TAP LUG TERMINAL ONE CABLE TO FLAT

BRONZE
TLS

Bronze alloy terminal for connecting a copper cable directly to a flat copper pad. Recommended for power or grounding applications.

**Material:** **Castings**—Bronze alloy  
**Eyebolt**—High strength bronze  
**Hardware**—Stainless steel

**Note:** For copper cable connection to aluminum bus bar, specify tin-plated terminal with Belleville spring washer by adding suffix TPBW to catalog number. **Example:** TLS62LTPBW



SA  
7

## Product Data & Conductor Size

CATALOG NUMBER	COPPER CONDUCTOR RANGE		DIMENSIONS INCHES (MM)					APPROX. WT. EACH LBS. (KG)
	CABLE	CABLE DIAMETER INCHES (MM)	L	H	W	J	E*	
TLS22	#10 Sol.-#1 Str.	.102-.332 (2.59-8.43)	1-1/8 (28.58)	1-15/16 (49.21)	7/8 (22.22)	3/8 (9.52)	1/4 (6.35)	.20 (.10)
TLS22L	#10 Sol.-#1 Str.	.102-.332 (2.59-8.43)	1-1/8 (28.58)	2-7/16 (61.91)	7/8 (22.22)	3/8 (9.52)	3/4 (19.05)	.22 (.11)
TLS32	#8 Sol.-2/0 Str.	.128-.419 (3.25-10.64)	1-1/2 (38.1)	2-3/8 (60.32)	1-1/8 (28.58)	1/2 (12.7)	1/2 (6.35)	.30 (.14)
TLS32L	#8 Sol.-2/0 Str.	.128-.419 (3.25-10.64)	1-1/2 (38.1)	2-7/8 (73.02)	1-1/16 (26.99)	1/2 (12.7)	3/4 (19.05)	.34 (.15)
TLS35	#8 Sol.-2/0 Str.	.128-.419 (3.25-10.64)	1-1/4 (31.75)	2 (50.8)	1-1/16 (26.99)	3/8 (9.52)	1/4 (6.35)	.20 (.10)
TLS42	#6 Sol.-250 MCM	.162-.575 (4.11-14.60)	1-1/2 (38.1)	2-5/8 (66.68)	1-1/4 (31.75)	1/2 (12.7)	1/4 (6.35)	.43 (.20)
TLS42L	#6 Sol.-250 MCM	.162-.575 (4.11-14.60)	1-1/2 (38.1)	3-1/8 (79.38)	1-5/16 (33.34)	1/2 (12.7)	3/4 (19.05)	.46 (.21)
TLS52	#2 Sol.-350 MCM	.258-.681 (6.55-17.30)	1-11/16 (42.86)	2-3/4 (69.85)	1-5/16 (33.34)	1/2 (12.7)	1/4 (6.35)	.50 (.23)
TLS52L	#2 Sol.-350 MCM	.258-.681 (6.55-17.30)	1-11/16 (42.86)	3-1/4 (82.55)	1-5/16 (33.34)	1/2 (12.7)	3/4 (19.05)	.54 (.24)
TLS62	1/0 Sol.-500 MCM	.325-.813 (8.26-20.65)	1-11/16 (42.86)	3-1/16 (77.79)	1-9/16 (39.69)	1/2 (12.7)	1/4 (6.35)	.50 (.23)
TLS62L	1/0 Sol.-500 MCM	.325-.813 (8.26-20.65)	1-11/16 (42.86)	3-9/16 (90.49)	1-1/2 (38.10)	1/2 (12.7)	3/4 (19.05)	.54 (.25)
TLS89	2/0 Sol.-1000 MCM	.365-1.152 (9.27-29.26)	1-11/16 (42.86)	3-9/16 (90.49)	1-3/4 (44.45)	1/2 (12.7)	1/4 (6.35)	.79 (.36)
TLS89L	2/0 Sol.-1000 MCM	.365-1.152 (9.27-29.26)	1-11/16 (42.86)	4-3/8 (111.12)	1-3/4 (44.45)	1/2 (12.7)	3/4 (19.05)	.83 (.38)

\* Eyebolt is of sufficient length to bolt through a maximum of 1/4" or 3/4" thickness for parts with the 'L' suffix.